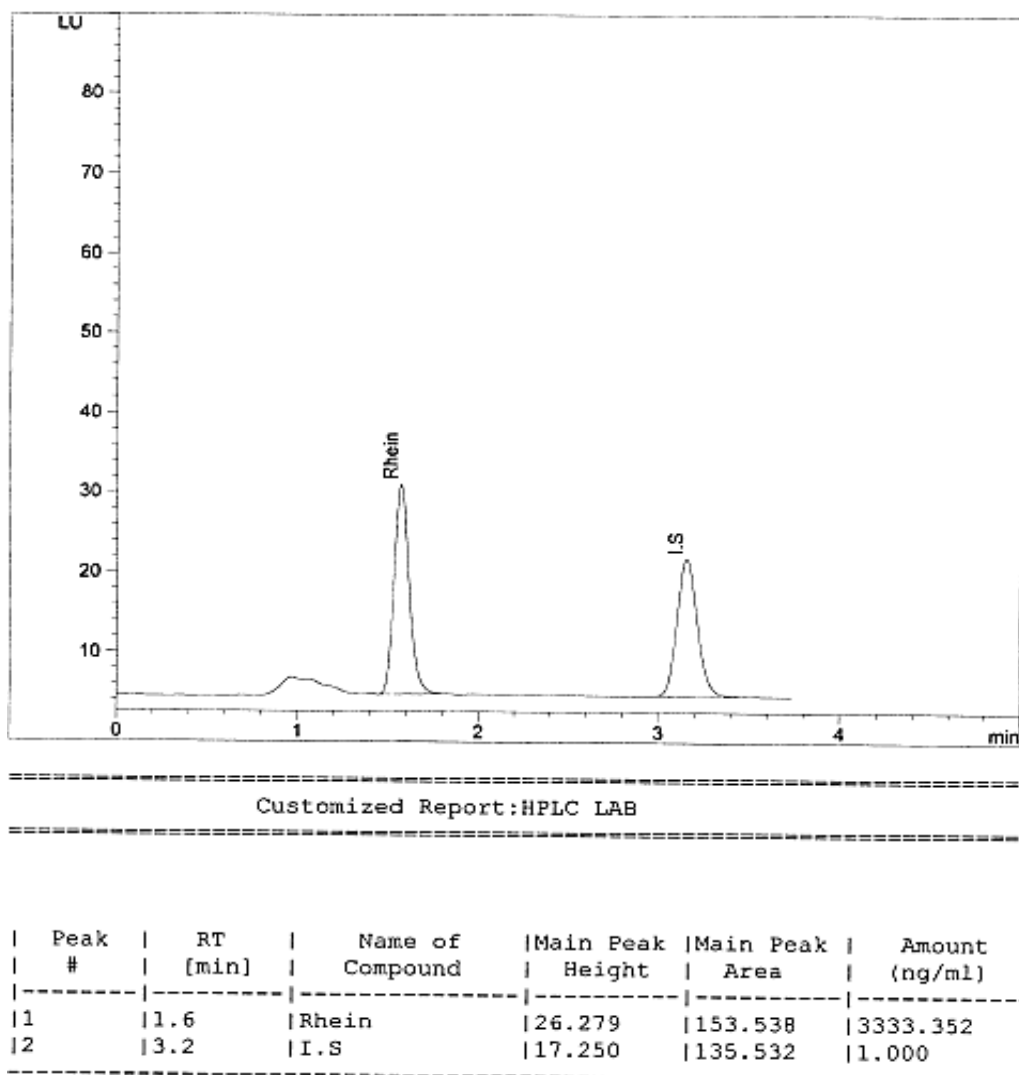


An example of the obtained chromatogram can be seen in figure 14.



**Figure 14:** Chromatogram of subject 1 at time point 0.75 hr

- Pharmacokinetic data in subjects, pre glucosamine administration – non compartmental:

The data obtained from the analysis of subjects' blood samples obtained during stage 1 was used to determine the pharmacokinetic parameters prior to glucosamine administration as summarized in table 8.